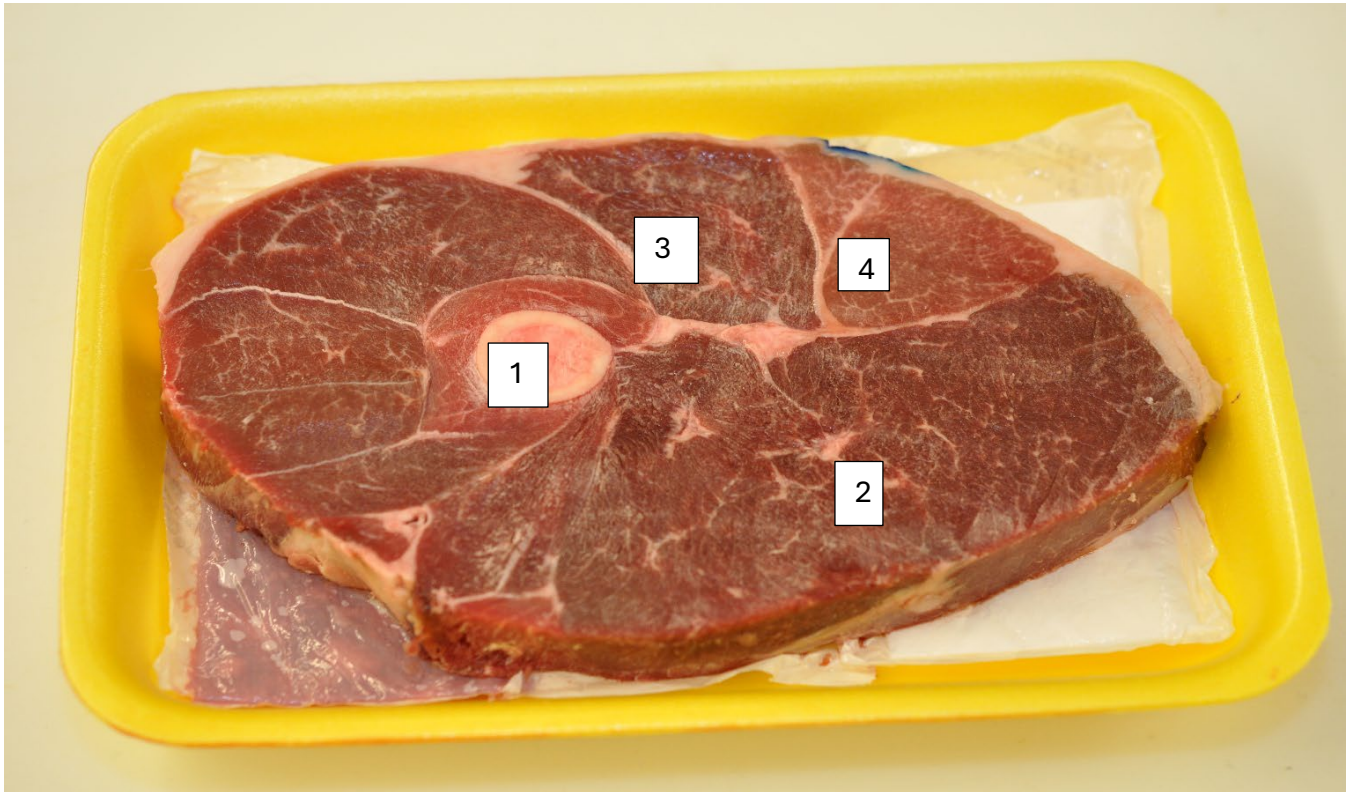
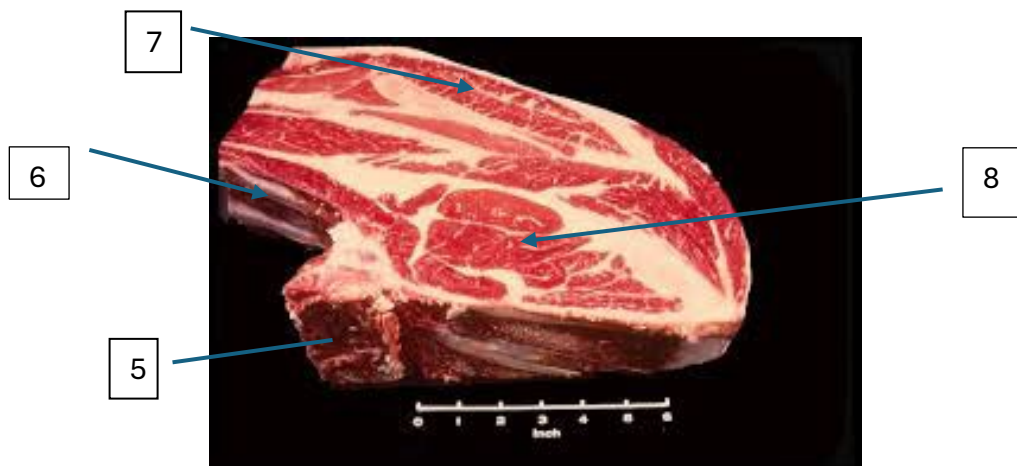


1



- | | | | |
|-------------------------|-----------------------|---------------------|---------------------|
| 1. A. Humerus | B. Femur | C. Scapula | D. Rib |
| 2. A. Longissimus dorsi | B. Gluteus medius | C. Semimembranosus | D. Infraspinatus |
| 3. A. Biceps femoris | B. Semitendinosus | C. Spinalis dorsi | D. Semimembranosus |
| 4. A. Psoas major | B. Semimembranosus | C. Gluteus medius | D. Semitendinosus |
| 5. Scapula | B. Thoracic Vertebrae | C. Lumbar Vertebrae | D. Sacral Vertebrae |
| 6. Transverse process | B. Scapula | C. Rib | D. Lumbar vertebrae |
| 7. Infraspinatus | B. Semitendinosus | C. Spinalis dorsi | D. Biceps femoris |
| 8. Psoas major | B. Semimembranosus' | C. Longissimus | D. Gluteus medius |



5